

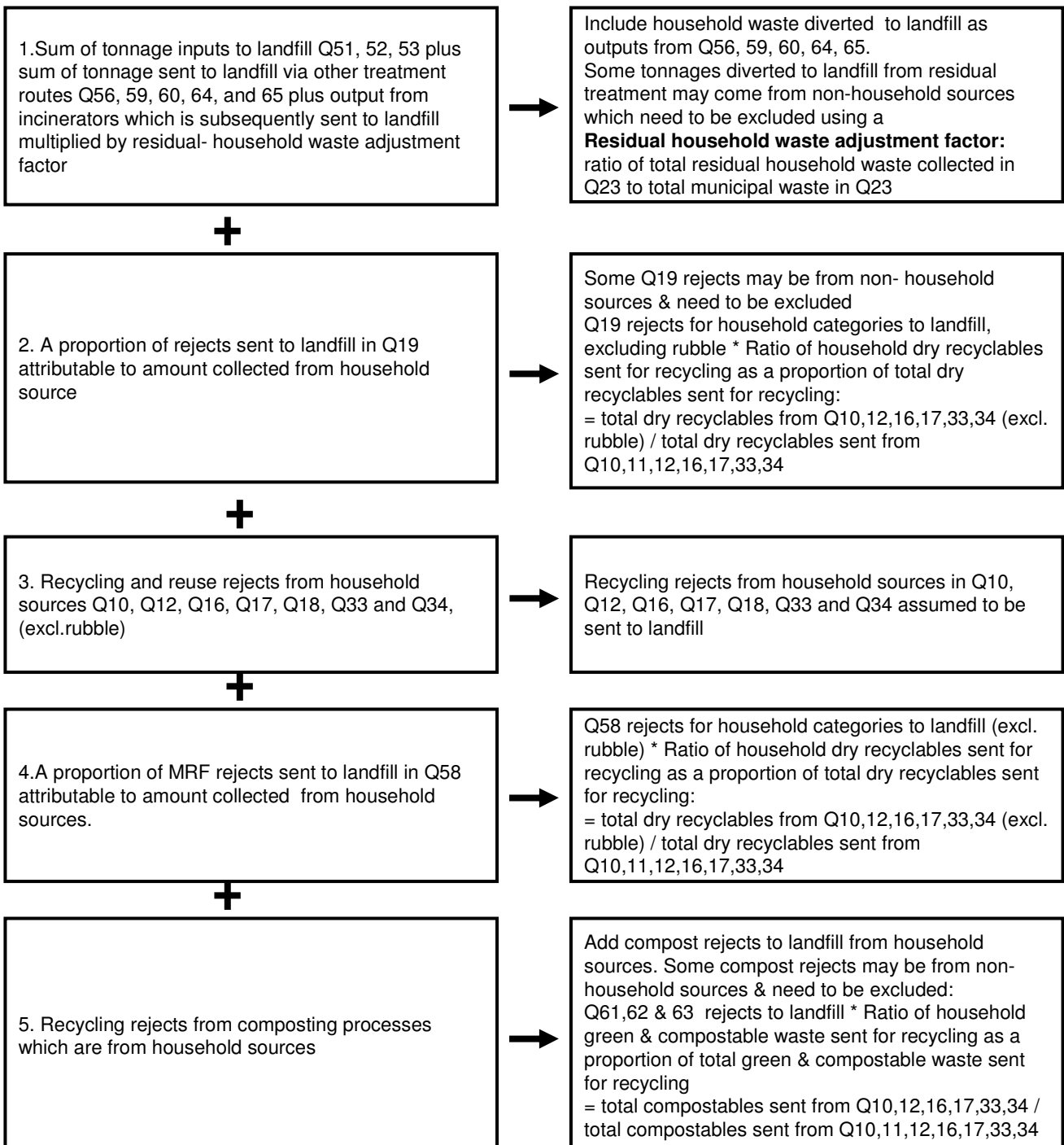
**Kpi (b) – Percentage of household waste arisings which have been landfilled**

**What the indicator measures:**

$$\frac{\text{Total tonnage of household waste collected which is landfilled}}{\text{Total tonnage of household waste arisings}} \times 100$$

How the numerator and denominator are calculated using WasteDataFlow is summarised below setting out the questions data is drawn from.

**Numerator**



### Denominator

1. Total tonnage of household waste collected for recycling from Q10, Q12, Q16, Q17, Q18 (household waste column), Q33 and Q34.



Excludes rubble.  
Material rejected is not deducted as this is part of the total household waste arisings.

+

2. Total tonnage of residual household waste from Q23



All collected household waste, CA site household, separately collected healthcare waste & gully emptyings.